

A woman with long, wavy blonde hair is sitting at a light-colored wooden table in a modern, bright interior. She is wearing a white, textured, long-sleeved top. She is looking down at a black smartphone in her right hand. Her left hand is resting on the table, with fingers slightly spread. On the table, next to her left hand, is a small, dark, spherical object, possibly a smart speaker or a decorative item. The background shows large windows with white blinds, a white sofa with cushions, and a modern ceiling with exposed beams.

# KADECO®

## Motionblinds MOTORS

TECHNOLOGY AND RECOMMENDED  
SPECIALIST RETAIL PRICES IN €  
VALID FROM 07/24

## EVE MOTIONBLINDS AND MOTIONBLINDS

Motionblinds is an innovative solution for automating decorative privacy, glare and sun protection systems. It enables the easy integration of motorised sun protection in any home.

### **Private and commercial properties**

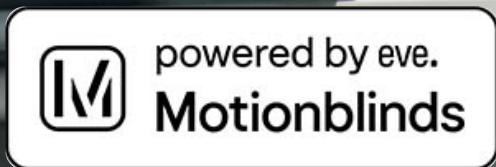
From battery-operated motors without cables to modern automation solutions for commercial buildings - Motionblinds has the right motorised solution for any requirement which is easy to install and operate.

**Motionblinds gives you the choice** - from control via a wall switch in the house or various remote controls right up to smart solutions such as voice control and operating via an app. Motionblinds enables integration into smart home systems and offers you an automation solution for interior sun protection systems that is fit for the future.





# EVE MOTIONBLINDS



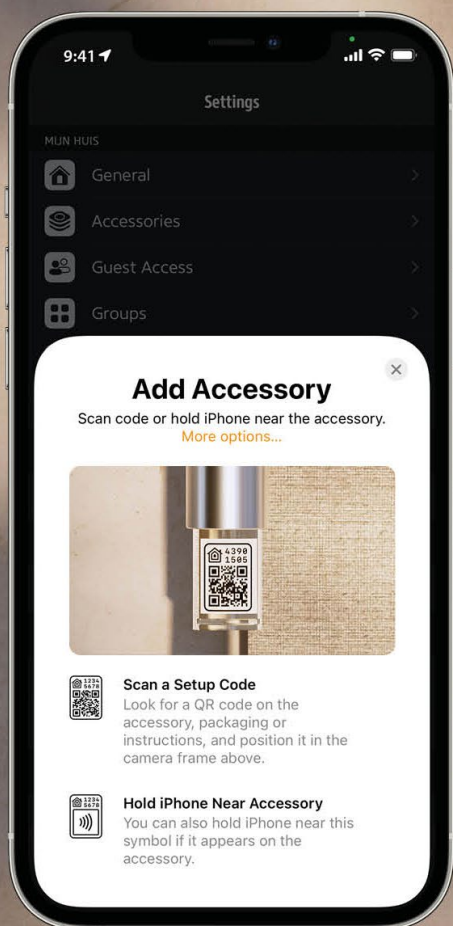
Thanks to Apple HomeKit, KADECO's powered by Eve Motionblinds battery-powered motor can be used for the smart and individual control of these high-quality roller blinds and Vario roller blinds by app and voice control using an iPhone, iPad, Apple Watch or HomePod.

## Quick and user-friendly

Smart devices are linked together in the Apple System. A HomePod mini or Apple TV allows external access to the control centre at home whenever required. Scenes can be created; timers and dependencies can be programmed and roller blinds can be controlled when you are out.



HEY SIRI, CLOSE MY ROLLER BLIND!



### Smart and easy

Integrating an Eve Motionblinds battery-powered motor into an existing Apple world is quick and easy. Simply scan the QR code then follow the step by step guide in the app.

### New, advanced and safe

The technology is future-proof - with Thread or Bluetooth, by app or voice command: KADECO powered by Eve Motionblinds works without the cloud and without registering. Information is saved locally and does not leave the home.

## eve. | MOTIONBLINDS



## MOTIONBLINDS WIFI-BRIDGE

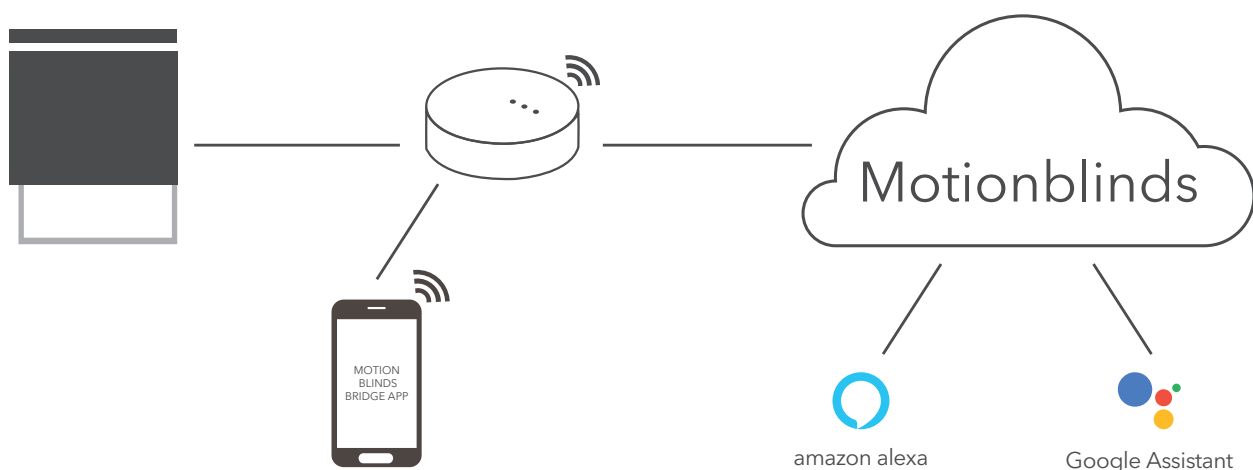
The Motionblinds (Mini) WiFi Bridge is the basis for the automated sun protection network. It is needed to enable operation via the app, for voice control or to connect to other smart home systems. It can be used with WIRELESS, LITIO and CENTRIO wireless motors.

The customer must have an internet connection to use it and a Motionblinds user account must be set up.



## MOTIONBLINDS HOME AUTOMATION

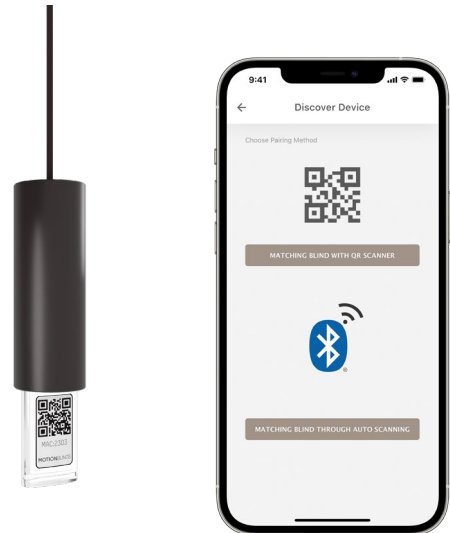
The Motionblinds bridge makes it possible to connect privacy and sun protection systems to various smart home systems. All that is needed for smart sun protection is an internet connection via a home router and the WiFi bridge.



# MOTIONBLINDS APPS

## Bluetooth app

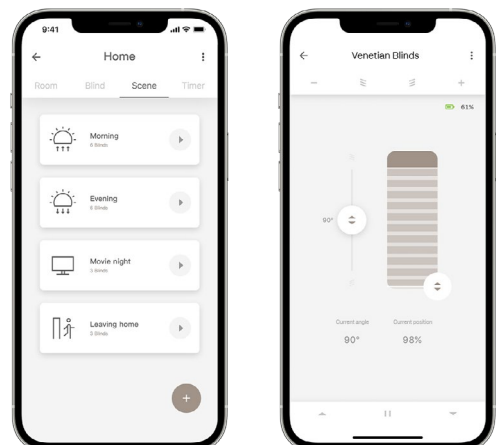
The Motionblinds Bluetooth app is your smart remote control. This user-friendly app can be used within the roughly 10 metre Bluetooth range to control and automate your sun protection. No bridge, no registration and no remote control are necessary. Scan the setup code and follow the instructions - and you are ready to start. The data will not leave your four walls.



## Bridge app

The app can be downloaded for free in the download centres for iOS and Android on smartphones by searching for "Motionblinds". The privacy and sun protection products can be organised, operated and automated with the help of scenes and timers via a graphical user interface on the app.

The customer must have an internet connection to use it and a Motionblinds user account must be set up. It can only be used in connection with the Motionblinds Wi-Fi bridge



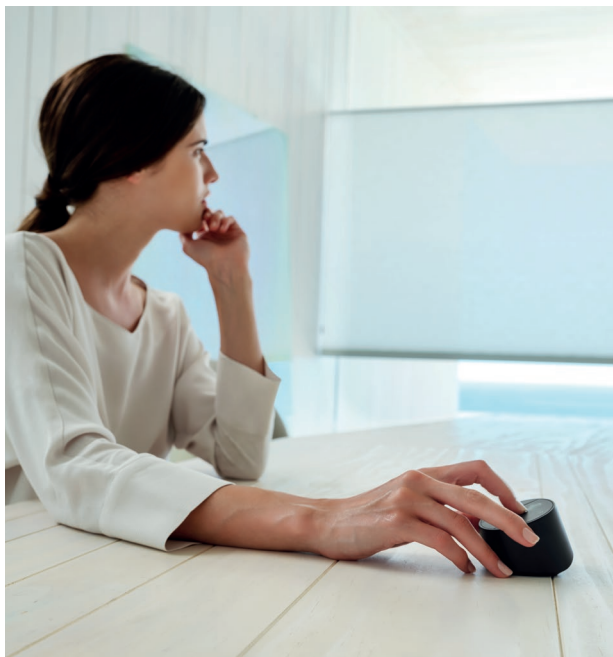
# MOTIONBLINDS WIRELESS REMOTE CONTROLS



The remote controls have a high-quality look and feel to them. A suitable wall bracket is included with the product (not for the table-top remote control).

The 5 and 15-channel wireless remote control systems allow the end position to be finely adjusted straight from the hand-held transmitter. This is necessary when mounting the Motionblinds CENTRIO motor on the ceiling.

The 4-channel wall-mounted remote control is made of aluminium and has a very high-quality look and feel. Since the wall bracket included with the product is magnetic, the remote control can be detached if required for mobile use.



The 4-channel table-top remote control is ideal for conference rooms or for stationary positioning where it is always in reach. Groups can easily be created by selecting and deselecting individual channels. LEDs provide a visual display of the selected channels.

An external pull remote control is also available. A pulling motion on the transmitter sends a wireless command to control the system. It can be fixed to a wall, ceiling or sloping roof. The fixing materials are included with the product.

Wireless remote controls can be used with any wireless motor.



1-channel remote control



5-channel remote control



15-channel remote control



4-channel wall-mounted remote control



4-channel table-top remote control



1-channel pull cord remote control